



# MZF-1 Polyclonal Antibody

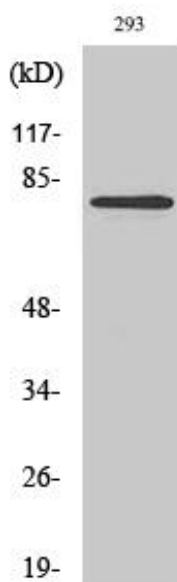
<b>Catalog No</b>	YP-Ab-01888
<b>Isotype</b>	IgG
<b>Reactivity</b>	Human;Rat;Mouse;
<b>Applications</b>	WB;IHC;IF;ELISA
<b>Gene Name</b>	MZF1
<b>Protein Name</b>	Myeloid zinc finger 1
<b>Immunogen</b>	The antiserum was produced against synthesized peptide derived from human MZF-1. AA range:1-50
<b>Specificity</b>	MZF-1 Polyclonal Antibody detects endogenous levels of MZF-1 protein.
<b>Formulation</b>	Liquid in PBS containing 50% glycerol, 0.5% BSA and 0.02% sodium azide.
<b>Source</b>	Polyclonal, Rabbit,IgG
<b>Purification</b>	The antibody was affinity-purified from rabbit antiserum by affinity-chromatography using epitope-specific immunogen.
<b>Dilution</b>	WB: 1/500 - 1/2000. IHC: 1/100 - 1/300. ELISA: 1/10000.. IF 1:50-200
<b>Concentration</b>	1 mg/ml
<b>Purity</b>	≥90%
<b>Storage Stability</b>	-20°C/1 year
<b>Synonyms</b>	MZF1; MZF; ZNF42; ZSCAN6; Myeloid zinc finger 1; MZF-1; Zinc finger and SCAN domain-containing protein 6; Zinc finger protein 42
<b>Observed Band</b>	82kD
<b>Cell Pathway</b>	Nucleus.
<b>Tissue Specificity</b>	Preferentially expressed in differentiating myeloid cells. Detected in osteoblasts.
<b>Function</b>	function:May be one regulator of transcriptional events during hemopoietic development.,induction:By retinoic acid.,similarity:Belongs to the krueppel C2H2-type zinc-finger protein family.,similarity:Contains 1 SCAN box domain.,similarity:Contains 13 C2H2-type zinc fingers.,tissue specificity:Preferentially expressed in differentiating myeloid cells.,
<b>Background</b>	function:May be one regulator of transcriptional events during hemopoietic development.,induction:By retinoic acid.,similarity:Belongs to the krueppel C2H2-type zinc-finger protein family.,similarity:Contains 1 SCAN box domain.,similarity:Contains 13 C2H2-type zinc fingers.,tissue specificity:Preferentially expressed in differentiating myeloid cells.,
<b>matters needing attention</b>	Avoid repeated freezing and thawing!



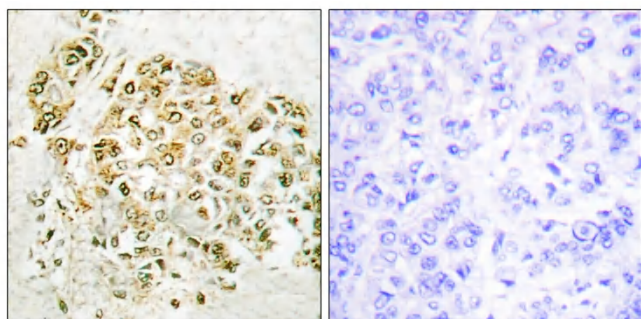
**Usage suggestions**

This product can be used in immunological reaction related experiments. For more information, please consult technical personnel.

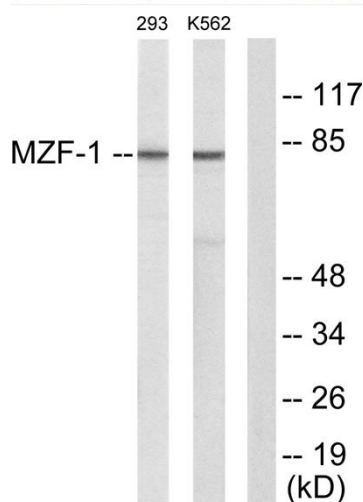
**Products Images**



Western Blot analysis of various cells using MZF-1 Polyclonal Antibody diluted at 1:2000 cells nucleus extracted by Minute TM Cytoplasmic and Nuclear Fractionation kit (SC-003, Inventbiotech, MN, USA).



Immunohistochemistry analysis of paraffin-embedded human breast carcinoma tissue, using MZF-1 Antibody. The picture on the right is blocked with the synthesized peptide.



Western blot analysis of lysates from 293 and K562 cells, using MZF-1 Antibody. The lane on the right is blocked with the synthesized peptide.